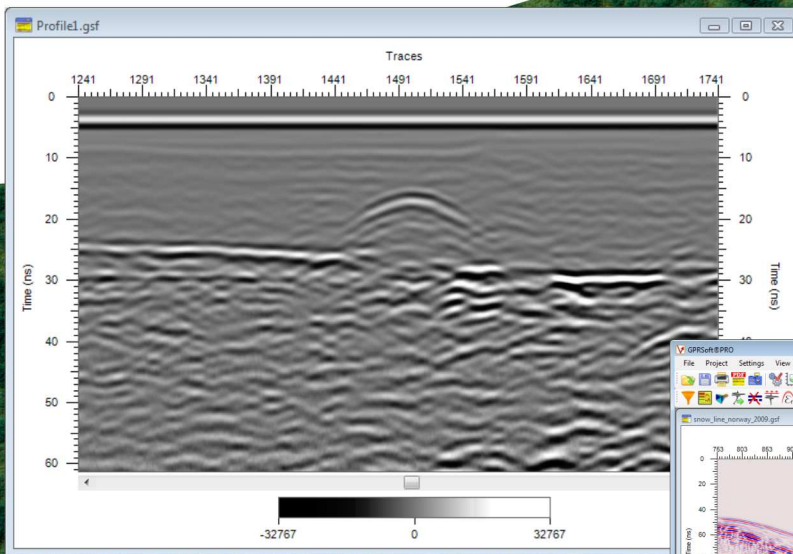


Geoscanners AB

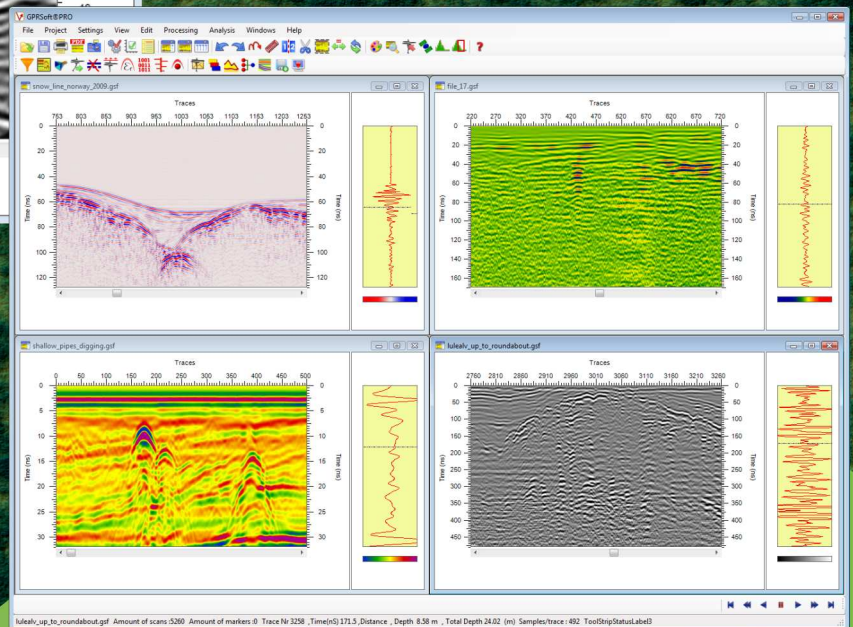
geophysical survey solutions



User friendly software for GPR Data interpretation results and presentations.



GPRSoft® represents a remarkable step forward in the field of ground penetrating radar data processing software. This completely new and effective approach to doing data analysis and processing is a result of many years of unprecedented collaboration between a highly skilled team of software engineers, geophysicists and end users. The work flow has been optimized to ensure a smooth interpretation and presentation of the results.



Key Features:

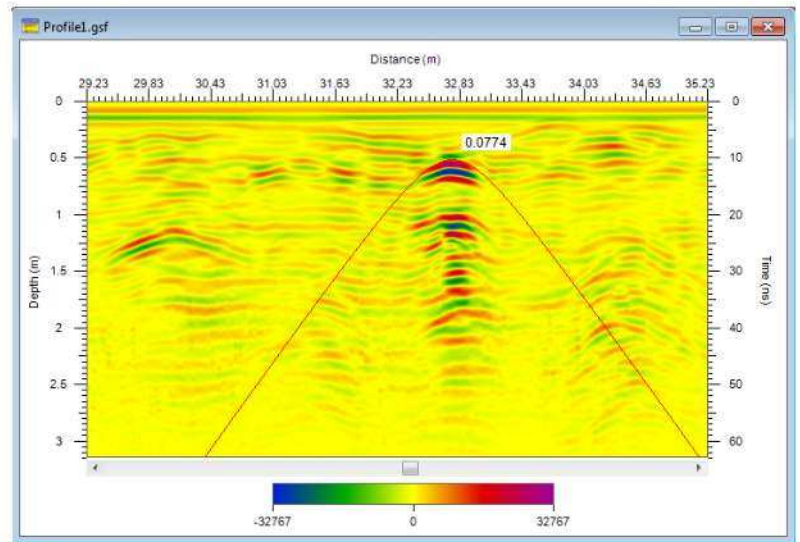
- User friendly, intuitive interface
- Equipped with advanced presentation tools
- Loaded with powerful tools for Data Interpretation & Analysis
- Complete range of processing functions
- Extended macro functions support
- Interactive data interpretation tools
- Integrated PDF capabilities for print out
- Integration of GPS coordinates into data
- Annotate and direct draw on profiles
- Support all major GPR Data Formats

GPRSoft®

Smooth and Efficient Processing of
Ground Penetrating Radar Data

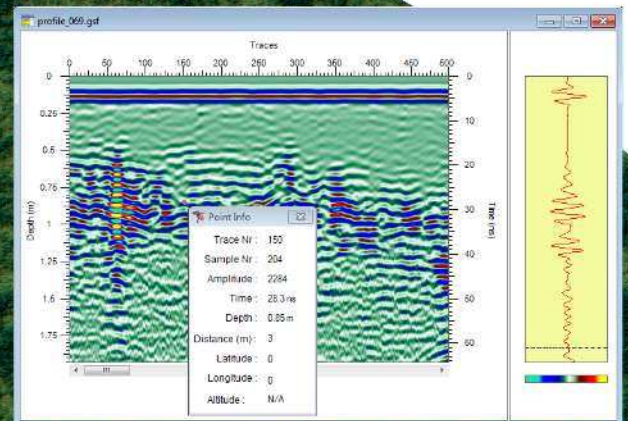
The velocity analysis tool is one of the many interactive interpretation tools available in GPRSoft. It also includes determination of the true relative dielectric permittivity of the media by migration adaptation, slope fitting and depth to known targets calibration.

One of the several ways available to adjust the velocity of the media in the active profile is the hyperbola fitting tool. This tool not only allows you to find out the correct velocity of the media based on the hyperbolas geometry, but also will automatically update the stored value of the relative dielectric permittivity in the file header. As a result of this the depth scale will also be automatically updated to reflect the true depth information of the targets of interest.

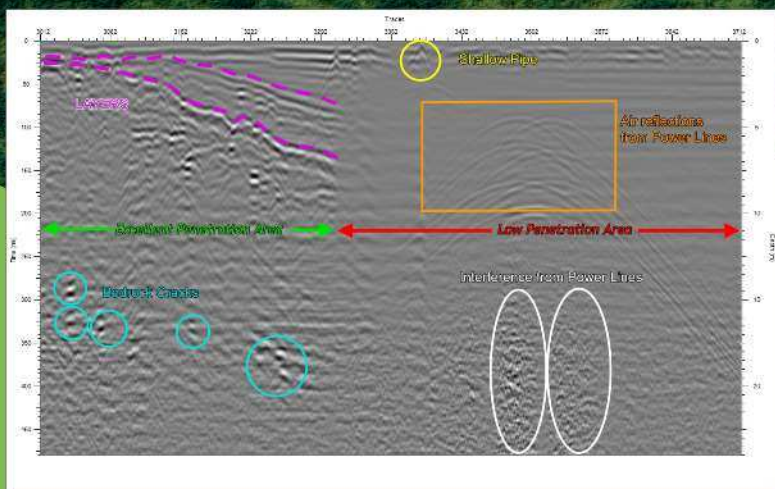


Minimum System Requirements

- Windows® 2k, XP, Vista or Windows 7®
- 32-bit or native 64-bit Microsoft® Windows machines
- Intel® processor 1 GHz CPU clock, recommended 2.4 GHz or higher.
- 1024 megabytes (MB) of RAM, recommended 2048 MB or higher.
- 50 MB free disk space plus space enough to import the file.
- 256-color video display adapter.
- Screen area: 800x600, recommended 1024x768 or better.



GPRSoft counts with a large amount of little tools that makes the interpretation of the radar profiles easier and more intuitive. One of these little gems is the point info tool. This tool will extract all the available information about any given point on your gpr data profile and present it in a logical way. This includes coordinates information, amplitude of the signal, depth information and much more. Most of this information is also available while hovering the pointer of your mouse over the data profile, but it is certainly much more convenient to be able to freeze this information without worrying about small movements of your pointer.



One of the many unique features of GPRSoft that stands up from the majority of other software is the capability of drawing shapes and inserting text directly on top of the data files. This feature eliminates completely the need of exporting the profile into an image file and processing it after with some picture manipulation software. Making reports and explaining to your customers what you see on the radar profile has never been easier.



Geoscanners AB, Pontonjävvägen 10, 96143 Boden, Sweden
 Telephone Office: +46 921 530 20, Telephone Factory: +46 921 544 05
 e-mail: info@geoscanners.com
www.geoscanners.com